

Enrollment trends

Fieldcrest CUSD 6

August 29, 2018

6th Day Enrollment 2018-2019

2018-2019

	Primary	Intermediate	Middle	HS	Total
PK/ECE	26				26
K	60				60
1	65				65
2	59				59
3		57			57
4		72			72
5		62			62
6			76		76
7			86		86
8			75		75
9				85	85
10				100	100
11				78	78
12				84	84
Total	210	191	237	347	985

Cohort

Change

20.0

21.7

19.7

19.0

24.0

20.7

8

-3

-3

0

-3

2

1

4

5

-15

-2

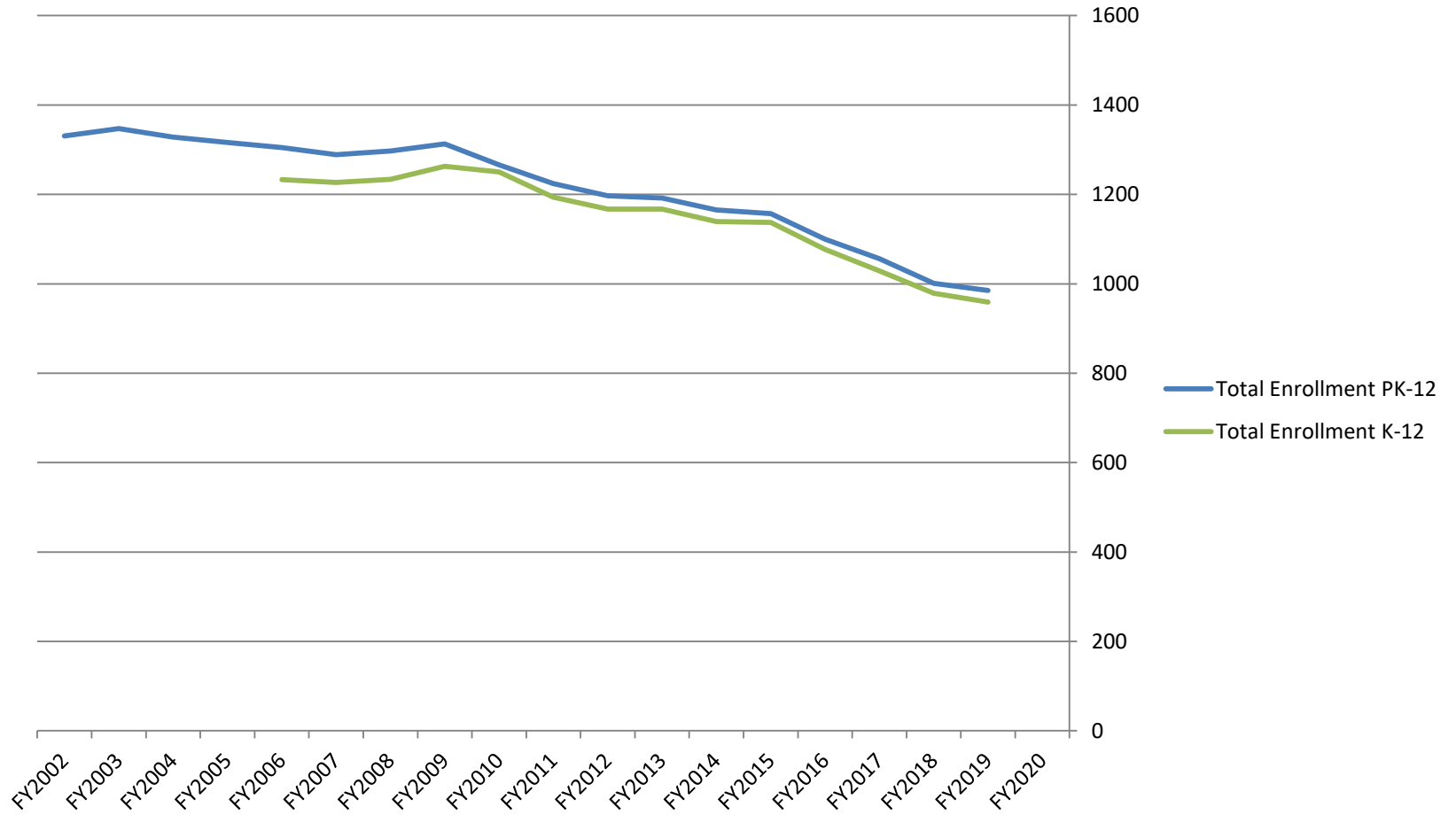
-5

985


Comparison 6th day enrollments

	PK-12		K-12	
FY2020				
FY2019	985	-16	959	-20
FY2018	1001	-55	979	-50
FY2017	1056	-44	1029	-48
FY2016	1100	-57	1077	-60
FY2015	1157	-8	1137	-2
FY2014	1165	-27	1139	-28
FY2013	1192	-5	1167	0
FY2012	1197	-27	1167	-27
FY2011	1224	-42	1194	-56
FY2010	1266	-47	1250	-13
FY2009	1313	16	1263	29
FY2008	1297	8	1234	7
FY2007	1289	-16	1227	-6
FY2006	1305	-11	1233	
FY2005	1316	-12		
FY2004	1328	-19		
FY2003	1347	16		
FY2002	1331			

Enrollment Graph



Change in grades K-12

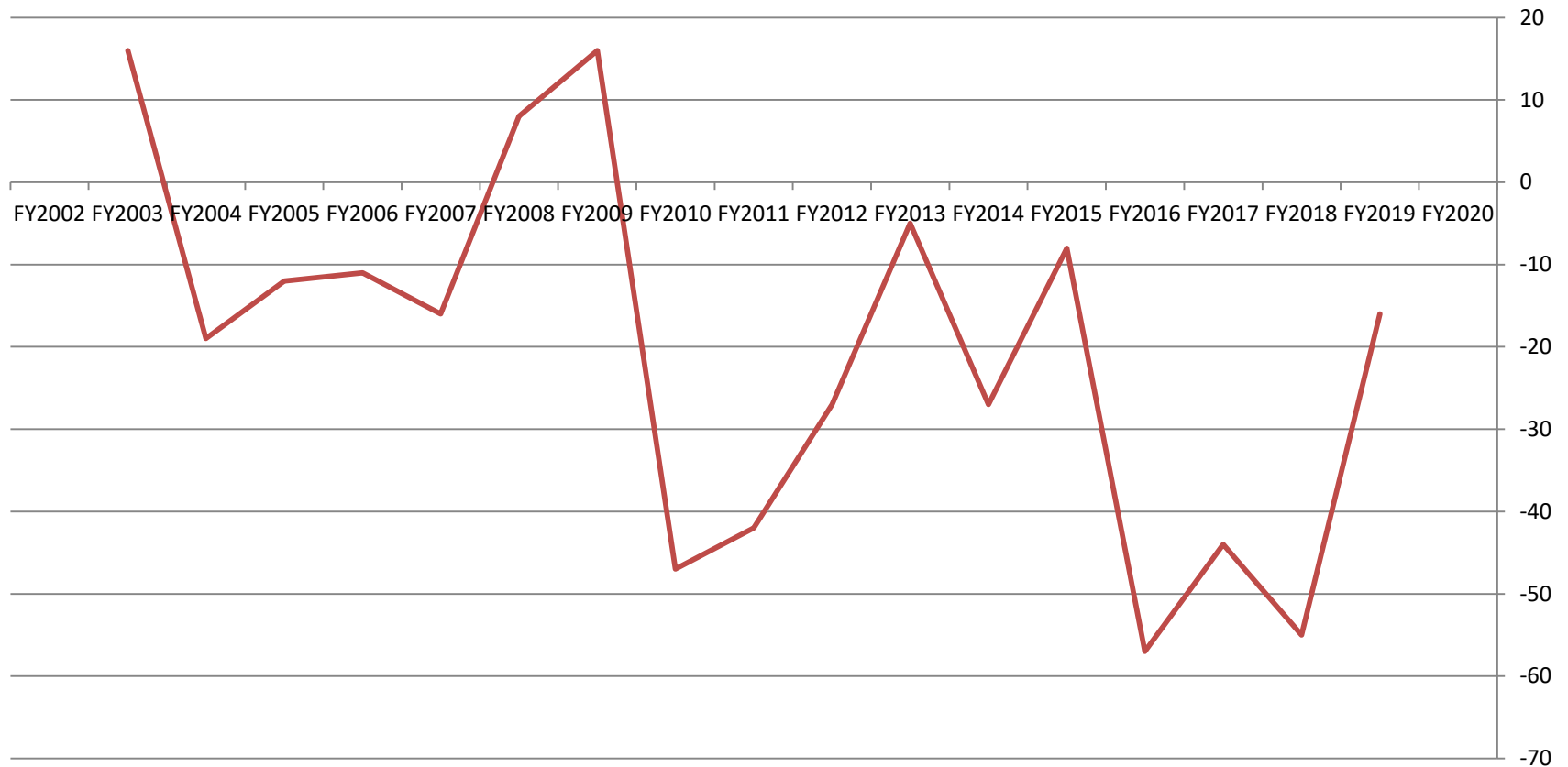
- ▶ Last year's grade 12 - 69
 - ▶ This year's K - 60
 - ▶ Should be down 9 students in K-12 by comparison
 - ▶ Actually down 20 in K-12
 - ▶ Slightly larger drop than can be accounted for by cohort change
- 

Significant Changes


- ▶ FY16–FY18 - Down 156
- ▶ FY10–FY12 - Down 116

Annual Change Comparison

Total Enrollment PK-12



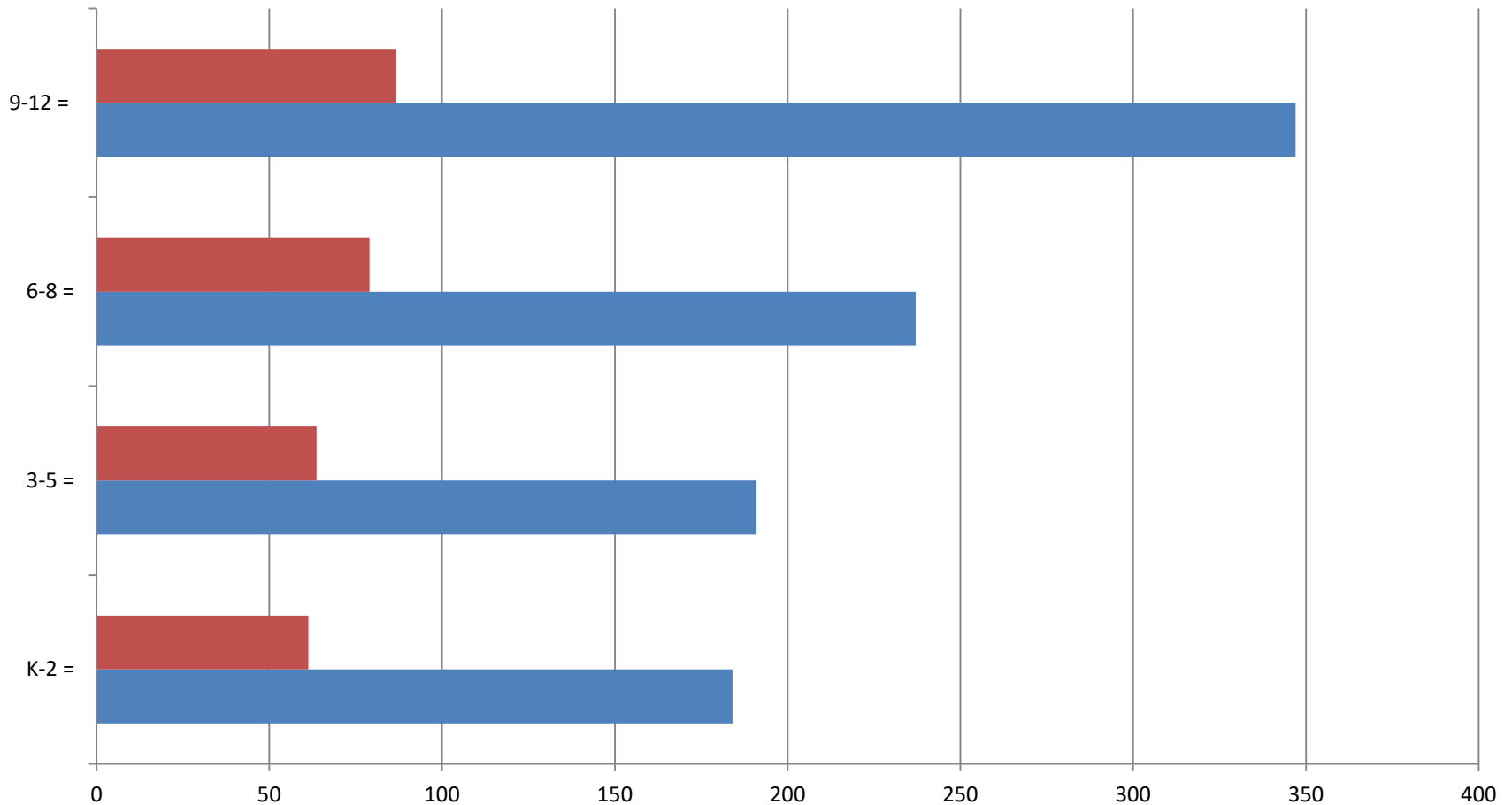
Average Annual Enrollment Change

- ▶ 2 year -35.5
 - ▶ 3 year -38.3
 - ▶ 4 year -43.0
 - ▶ 5 year -36.0
 - ▶ 10 year -32.8
-
- ▶ Last year flat or positive FY09
 - ▶ Only three flat or positive years since FY02
 - ▶ HOWEVER, last four entry years around 60, indications of plateau
- 


FY19 Average Class Sizes

- ▶ 9–12 86.8 (88.3 in FY18)
- ▶ 6–8 79.0 (78.7 in FY18)
- ▶ 3–5 63.7 (70.3 in FY18)
- ▶ K–2 61.3 (59.7 in FY18)


FY19 Average Class Size



Why Do Our Students Leave?

- ▶ We reviewed why non–returning students left last year
 - ▶ While we can't account for every student, the biggest known issues were:
 - Families in flux
 - Job related issues, in a number of forms
 - Issues related to poverty
 - ▶ Other much smaller issues, now and past
 - Better opportunities for living and/or education elsewhere
- 

Enrollment Projection Methods

- ▶ Hard to predict future K enrollment, with four counties involved – no trend in county births matches our district
 - ▶ Using current K number ranges, using 60 in K for next five years
 - ▶ Also study current trends for each class to make prediction
- 

Five Year Projections

Projections	2019-2020	2020-2021	2021-2022	2022-2023	2023-2014
K	60	60	60	60	60
1st	60	60	60	60	60
2nd	61	60	60	60	60
3rd	61	61	60	60	60
4th	58	61	61	60	60
5th	76	58	61	61	60
6th	61	76	58	61	61
7th	76	60	76	58	61
8th	89	76	59	76	58
Freshman	74	89	76	58	76
Sophomore	85	74	89	76	57
Junior	102	85	74	89	76
Senior	75	102	85	74	89
	2019-2020	2020-2021	2021-2022	2022-2023	2023-2014
Grades K-2	182	181	180	180	180
Grades 3-5	195	180	182	181	180
MS	226	212	193	195	180
HS	336	350	324	297	298
Total	939	923	879	853	838
Total MS/HS	562	562	517	492	478

Enrollment Decline Impact

- ▶ Over the next few years
 - Building space usage and repair/replace scenarios updated FY19... number of sections in grades K–8 won't change much over next several years... main impacts will come at HS levels
 - Staffing numbers (slight changes K–8 over next several years, larger changes likely at HS)
 - Ability to offer curricular and extra curricular programs, especially at HS level?
 - MS will have some impact in extra curricular as well
 - Based in part on enrollment
 - Evidence-based funding – will likely flatten
 - State/federal grants (Title I, II, IV) – continued drops in funding

Questions?

